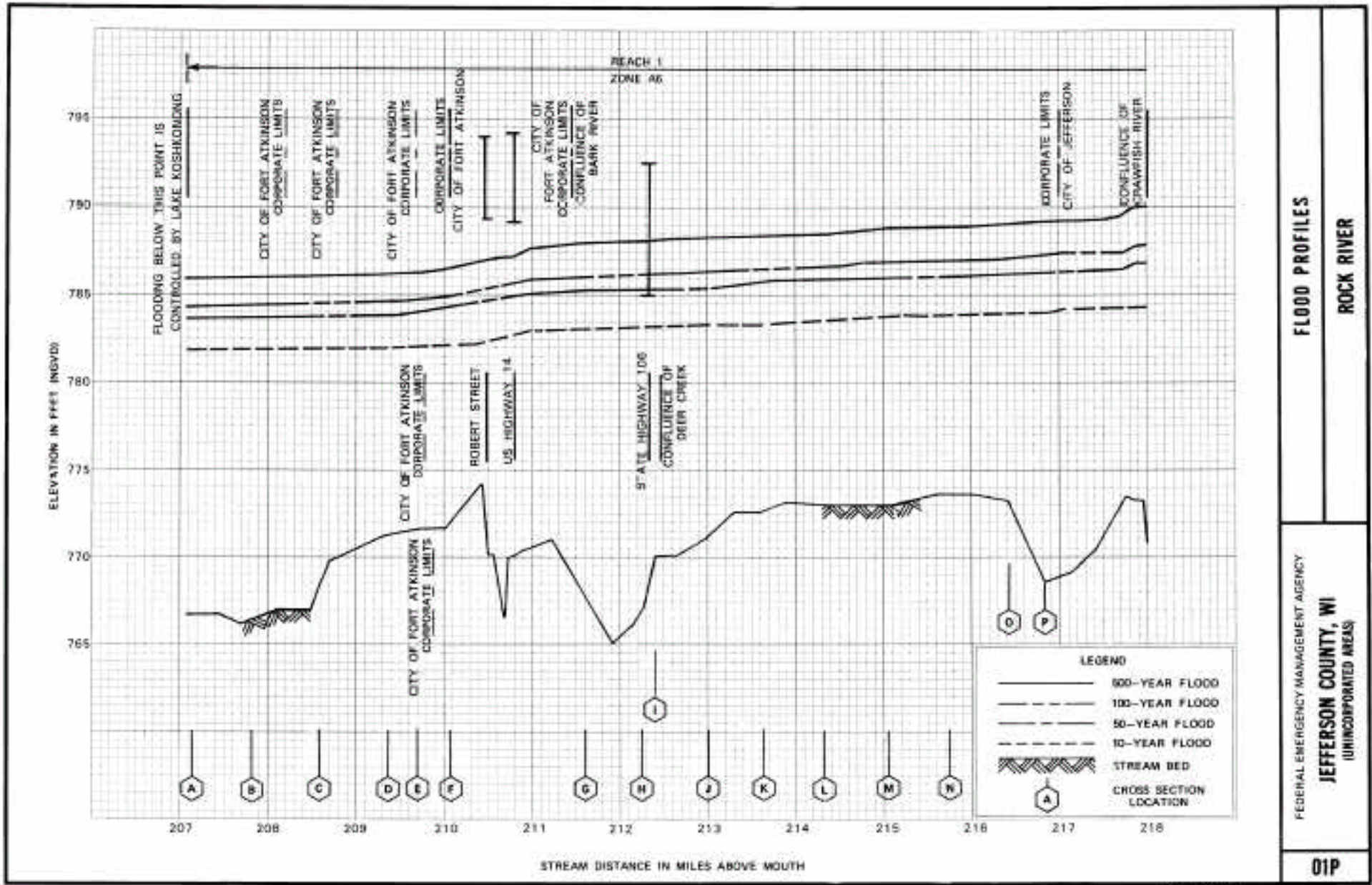


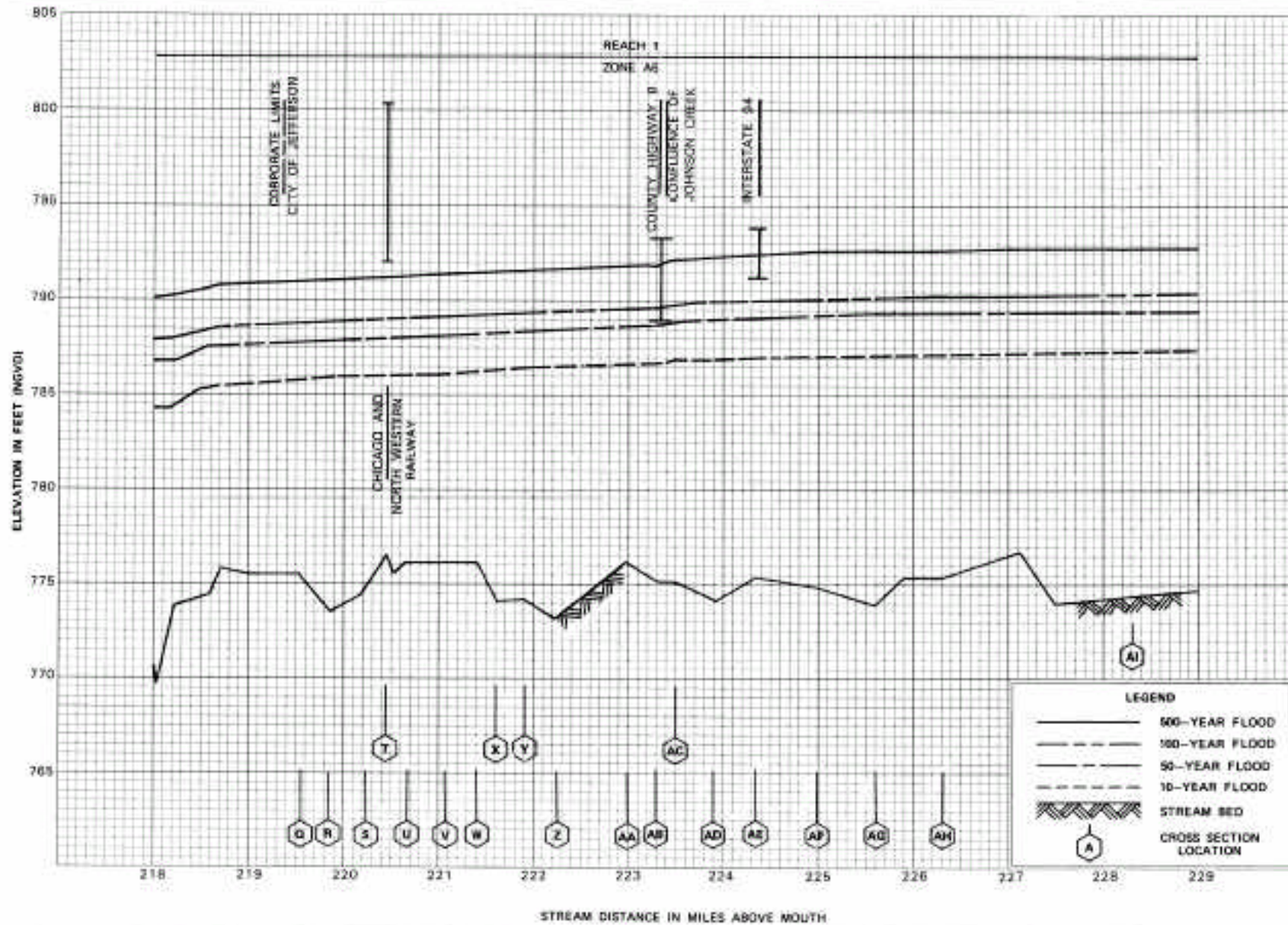
Attachment 7. Channel profiles



FLOOD PROFILES
ROCK RIVER

FEDERAL EMERGENCY MANAGEMENT AGENCY
JEFFERSON COUNTY, WI
(UNINCORPORATED AREAS)

Attachment 7. Channel profiles



FLOOD PROFILES

ROCK RIVER

FEDERAL EMERGENCY MANAGEMENT AGENCY

JEFFERSON COUNTY, WI
(UNINCORPORATED AREAS)

02P

REVISED: 03/1984

Attachment 7. Channel profiles

